

JANUARY 2019

Serving Brewster County for 36 years



Mittens

**ALPINE HUMANESOCIETY**  
**2018 ANNUAL REPORT**

# A MESSAGE FROM OUR PRESIDENT

Alpine Humane Society serves all 6,192 square miles of Brewster County, the largest county in Texas.

This large geographic area, small population of 9,200 residents, long international border with Mexico, and only one incorporated city presents an enormous challenge. Alpine Animal Services and their shelters serve only the City of Alpine (population 6,000), leaving significant gaps in animal services for the remainder of the county.

Alpine Humane Society works closely with Alpine Animal Services, but AHS and AAS are two separate entities with distinctly different purposes. AAS is responsible for enforcement of animal control laws within Alpine city limits and operation of Alpine Animal Shelter, including the adoption of their homeless shelter pets. Alpine Humane Society does not shelter or adopt out animals.

Alpine Humane Society supplements the work of AAS by providing pet food and cat litter for Alpine shelter animals, paying for spaying and neutering of all Alpine shelter animals, employing two AHS shelter-dedicated staffers to provide enrichment to shelter animals and provides daily volunteers to clean kennels, walk dogs, and socialize cats. Additionally, AHS does all the adoption PR/marketing of AAS shelter animals including flyers, social media, radio, and newspaper ads.

In 2018, Alpine Humane Society made huge strides in our effort to serve all of Brewster County. We significantly increased our outreach to south Brewster County--including Big Bend National Park, Terlingua, and Lajitas--and the unincorporated town of Marathon by increasing our volunteer base in those areas. With the purchase of a transport van, we now can transport non-shelter Brewster County homeless pets to our rescue partners across Texas and the U.S.

Programs and outreach are made possible by our dedicated volunteers, donors, and supporters. AHS is a member-driven organization. You are critical to turning our vision into reality. Your support helps us save lives and build community commitment to the humane treatment of animals in Brewster County. I invite you to attend our monthly meeting at 5:30 pm on the second Monday of each month at Alpine Public Library.

Vicki Gibson  
2019 President  
Alpine Humane Society

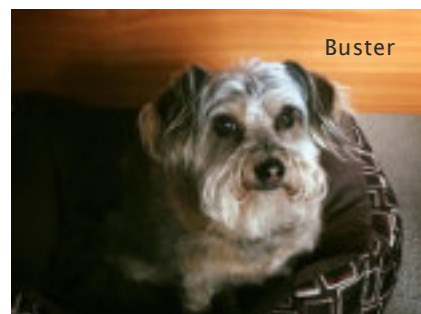


Lucky

The  
Gibson  
Gang



Buddy



Buster



Lexi



Chica

# ABOUT ALPINE HUMANESOCIETY



Cricket

## MISSION

AlpineHumaneSocietybuildscommunitycommitment tothehumanetreatmentofanimals. Toachievethis visionweprovideadoptivesupportservices, spay/neuter funding,medicalassistance,andcommunityeducation.



Toffee

# VISION

Brewster County, Texas:  
Where every animal has a  
full and rewarding life.

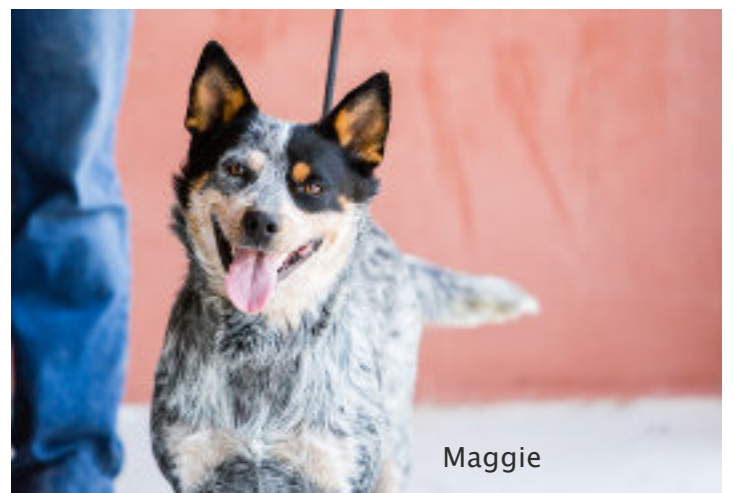
# VALUES

Six core values guide our  
work and decision making:

- We do our work with passion, compassion, respect, and kindness.
- We are dedicated to reducing suffering and improving the lives of animals.
- We believe community engagement and education are the best ways to eliminate pet overpopulation.
- We are committed to the pursuit of successful pet adoptions.
- We believe euthanizing adoptable animals is unacceptable.
- We believe every dog and cat should be spayed/neutered until there are no homeless pets.



Siam



Maggie

# HIGHLIGHTS

## Expansion of Enrichment Program

Carrie Branum continues in her role as AHSEnrichmentCoordinator improving the lives of cats and dogs at the Alpine shelter by coordinating shelter volunteers, leading dog play groups, and socializing cats. Additional training funded by AHS allowed for expansion of the enrichment program to include assessment and adoption counseling.



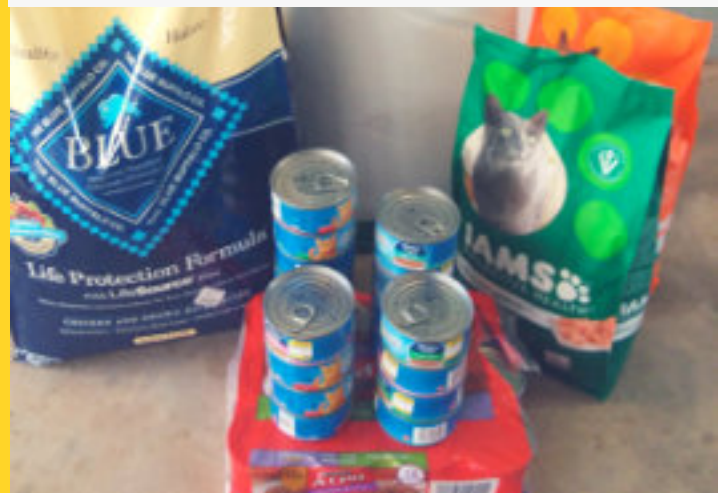
## Hill's Shelter Love Program

AHS continued participation in Hill's Shelter Love program to purchase Science Diet brand food providing high-quality pet food for all Alpine shelter animals.



## AHSPet Food Pantry

AHS provides pet food assistance to help humans feed their pets. We distributed hundreds of pounds of pet food in 2018. No paperwork required. Just ask at AHS Thrift Store, 706 N. 5th St. in Alpine.



# VOLUNTEERS

In 2018, AHS volunteers spent more than 15,000 hours walking shelter dogs, socializing shelter and thrift store cats, assisting with adoptions, providing foster care for orphaned kittens and other special needs pets, writing grant applications, providing financial oversight, transporting petsto our rescue partners, and much, much more!

AHS volunteers  
provided phone  
assistance to  
322 callers  
helping 546  
community pets  
in 2018

# TRANSPORT

Continued expansion of our transport program through the purchase of a transport van and broadening network of rescue partners.

Through a generous matching grant from Potts and Sibley Foundation, AHS was able to purchase a transport van, which significantly improves our ability to transport animals.

Our transport program is committed to safe, humane travel. We transport healthy dogs and cats to our in-state and out-of-state rescue partners.

Rescue partners are carefully screened by our Transport Coordinator. Most are foster-based. All include a lot of enrichment, rigorous adoption counseling, and behavioral support. Some are speciality rescues for bully breeds, seniors, or pets with medical and/or behavioral issues.



We concentrate on transporting Brewster County animalstocommunities without pet overpopulation problems, advocating for long-stay, high-risk Alpine shelter pets and other dogs and cats in Brewster County foster-based programs.

In 2018, Alpine Humane Society transported 75 petstoourrescue partners—53 dogs and 22 cats—which helped Alpine Animal Services (the only municipal shelter in Brewster County) shorten length of stay in the shelter and make sure no adoptable shelter pets are euthanized.

Brewster County homeless pets have been transported to Colorado, Oregon, Washington, and throughout Texas.



# Celebrating

4  
YEARS

No euthanasias  
for space at  
Alpine Animal Shelter



BBKing

Alpine Humane Society is a nonprofit organization serving Brewster County, Texas. We work closely with Alpine Animal Services, the only municipal shelter in Brewster County, but AHS and AAS are separate organizations with different, distinct purposes.

AHS provides food for all shelter animals, spays/neuters every shelter animal, walks dogs, socializes cats, promotes shelter animals for adoption, and more.

One of our goals is to make sure no adoptable animal at Alpine Animal Shelter is euthanized due to lack of space at the shelter.



# BUSINESS

Pets are the fun part of our work, but business operations and strategic planning mean AHS will be a viable organization for decades to come.



Edison

## STRATEGIC PLAN

AHS has produced a three-year strategic plan to guide us in implementing our goals, ideas, and plans. This is the culmination of more than two years of deliberation and dialogue between members, volunteers, staff, directors, and community members,

<http://www.alpinehumanesociety.org/strategic-plan-2019-2021.html>

## OUTREACH/EDUCATION

AHS Outreach/Education committee responsibilities included answering 351 phone calls to AHS in 2018. They assisted pet owners and feral cat colony caretakers with 546 Brewster County dogs and cats and authorized veterinary financial assistance totaling \$48,402. AHS now is authorizing an average of five spay/neuters in Marathone each month. Call-back efforts resulted in 20% more spay/neuter authorizations being used in 2018.

ALPINE HUMANESOCIETY  
FINANCIAL REPORTS ARE AVAILABLE UPON REQUEST  
EMAIL: ADMIN@ALPINEHUMANESOCIETY.ORG

# Medical & Spay/Neuter Financial Assistance

## Financial Assistance for Shelter & Community Pets

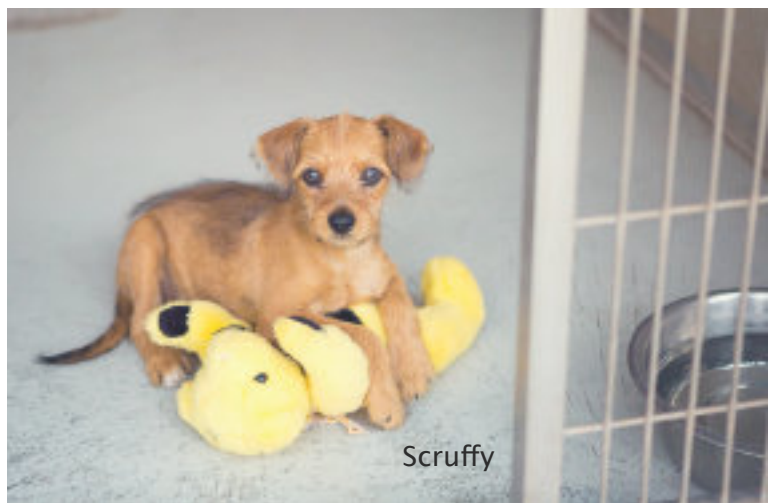
- 351 phone calls to AHS for assistance regarding 546 pets
- 515 spay/neuter surgeries authorized, including 250 feral cats
- 31 medical authorizations

AHS spent nearly \$60,000 on vet bills for shelter and community pets:

– \$33,438 spent on community pets for spay/neuter surgeries and medical assistance, including \$12,025 on feral cats.

– \$25,669 spent on Alpine shelters spay/neuter surgeries and medical assistance to ensure all adopted animals are sterilized and healthy.

In addition to paying for all spay/neuter surgeries and rabies vaccines for Alpine shelter animals, AHS also paid for approximately 30 spay/neuter surgeries each month for community pets and feral cats.



Scruffy

# ORPHANED KITTENS



In 2018, Alpine Humane Society began a pilot program for orphaned kittens.

This life-saving, foster-based program relies on experienced volunteers who bottle feed and closely monitor the health of kittens younger than six weeks.

Program capacity will grow as more volunteers are identified and trained.

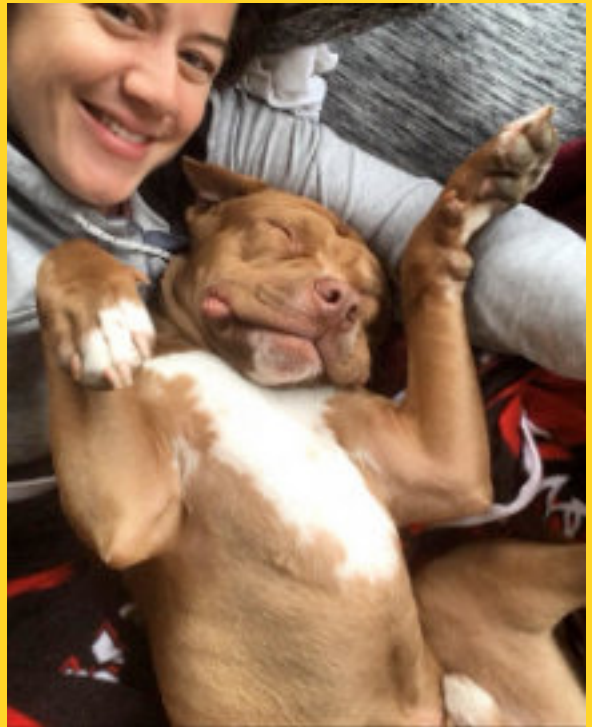


# HAPPY TAILS



Anabelle spent 577 days at the Alpine shelter until she was adopted by longtime AHS supporter, Thea. Anabelle hit the jackpot!

Tatoosh, Alpine shelter alum (formerly known as McFly), travels the country with his National Park Ranger mom and the rest of the furry family



Rundi, Alpine shelter alum (formerly known as Rachel) came to the shelter in very poor shape. Her foster mom, Heather, nursed her back to health and adopted her.

# ADDITIONAL STAFF FOR ANIMAL ENRICHMENT



Indica

With the addition of Dana Black, our new playgroup assistant, we now can run safer, more efficient dog playgroups. Dogs that require a lot of time in the yard also get more time and attention. An additional staff member means Carrie Branum, our Enrichment Coordinator, can spend time more one-on-one training dogs and socializing cats, which increases their chances for quick adoption.

# AHS THRIFT STORE & CATTERY

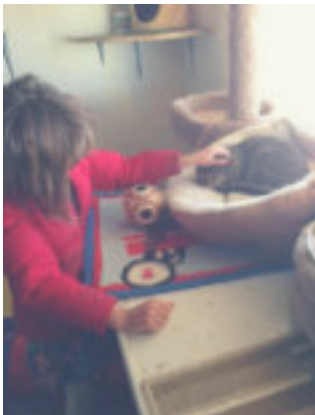


Celebrating  
our 5th  
anniversary!

Alpine Humane Society Thrift Store & Cattery got a facelift, including interior and exterior improvements.

Improvements to the cattery include:

- New, easy access for visitors
- Vertical expansion for more cat capacity (up to six cats)
- New toys, hammocks, and vertical climbing spaces
- Seating for visitors



# 2018 AHSSTATS

Alpine Humane Society is tax exempt under  
Internal Revenue Code Section 501(c)3.  
Tax ID #75-2070318

231

Alpine shelter  
animals adopted

142

Brewster County animals  
transported/transferred  
to AHS rescue partners

56

Average length of stay  
at Alpine shelter  
(Down from 81 days in 2017!)

15,000

Volunteer hours

515

Spay/neuter surgeries  
authorized, including  
250 feral cats

\$59,107

Spay/neuter/medical vet  
bills for shelter &  
community

0

Alpine Shelter Animals  
Euthanized  
for Space

Alpine Humane Society serves all 6,192 square miles of  
Brewster County, the largest county in Texas..

We assist Alpine Animal Service, the lone municipal  
shelter in Brewster County (which only serves the City of  
Alpine), by providing volunteers, animal enrichment,  
animal promotion, and more.

Alpine Humane Society does not shelter or adopt animals.  
All adoptions are handled through Alpine Animal Services  
or our other rescue partners.



# MEMBERSHIP

Alpine Humane Society is a member-driven organization. Your dues help us build community commitment to the humane treatment of animals in Brewster County.

Dues are \$15 per year.

[Join AHS](#)

Membership entitles you to:

- Voting rights at our monthly membership meeting
- 50% off all non-sale items at AHSThriftStore



## AHS Staff

### Shelter:

Carrie Branum, AHSEnrichmentCoordinator  
Dana Black, PlaygroupAssistant

### ThriftStore:

Leticia Fierro, AHSThriftStoreManager  
Erin Bittner, AHSThriftStoreStaff  
Karen Collins, AHSThriftStoreStaff



Goober & Milo



Quincy  
& Petal

## AHS 2018 Board of Directors

Jesse Kelsch, President  
Vicki Gibson, Vice President  
Patsy Culver, Treasurer  
Marilyn McGhee  
Gwin Grimes  
Tobin Becker, Thrift Store Director

## Contact AHS

Website:  
[alpinehumanesociety.org](http://alpinehumanesociety.org)

Email:  
[admin@alpinehumanesociety.org](mailto:admin@alpinehumanesociety.org)

Phone:  
(432) 837-2532



Copper